

Seasonal Specialty Stores 2016

Marquis eSeries Special Order Hot Tubs



322 eSeries

- Exterior Dimensions: 60" x 84" x 29.5"
- Seating Capacity: 3/4 seats
- Water Capacity: 195 gallons
- Number of Jets: 22 jets
- Pump: One pump
- Electrical Requirements: 120V/15 amp or 220V

322



425 eSeries

- Exterior Dimensions: 77" x 77" x 29.5"
- Seating Capacity: 4/5 seats
- Water Capacity: 300 gallons
- Number of Jets: 25 jets
- Pump: One pump
- Electrical Requirements: 120V 15 amp or 220V

425



435 eSeries

- Exterior Dimensions: 77" x 77" x 35"
- Seating Capacity: 4/5 seats
- Water Capacity: 310 gallons
- Number of Jets: 35 jets
- Pumps: one or two pumps
- Electrical Requirements: 240V/30 or 50 amp

435



524 eSeries

- Exterior Dimensions: 76" round x 35"
- Seating Capacity: 5/6 seats
- Water Capacity: 250 gallons
- Number of Jets: 24 jets
- Pumps: one pump
- Electrical Requirements: 120V/15 amp or 220V

524

Seasonal Specialty Stores 2016

Marquis eSeries Special Order Hot Tubs



545 eSeries

- Exterior Dimensions: 84" x 84" x 35"
- Seating Capacity: 5/6 seats
- Water Capacity: 350 gallons
- Number of Jets: 45 jets
- Pumps: two pumps
- Electrical Requirements: 240V/30 or 50 amp

545



660 eSeries

- Exterior Dimensions: 90" x 90" x 35"
- Seating Capacity: 6/7 seats
- Water Capacity: 390 gallons
- Number of Jets: 60 jets
- Pumps: two pumps
- Electrical Requirements: 240V/30 or 50 amp

660



750 eSeries

- Exterior Dimensions: 84" x 84" x 35"
- Seating Capacity: 7/7 seats
- Water Capacity: 370 gallons
- Number of Jets: 50 jets
- Pumps: two pumps
- Electrical Requirements: 240V/30 or 50 amp

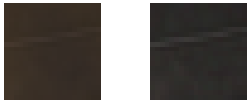
750

Seasonal Specialty Stores 2016

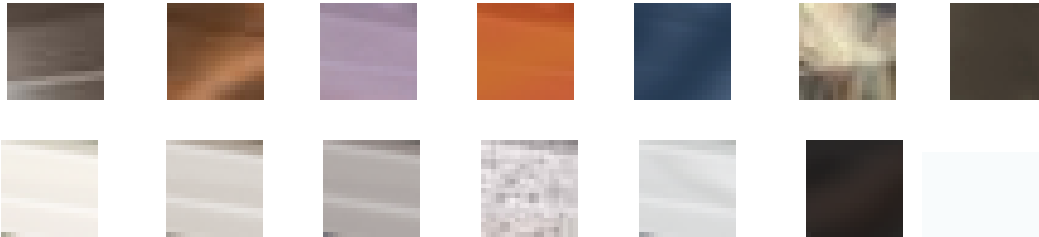
Marquis eSeries Special Order Hot Tubs

Marquis eSeries Colors:

Select DuraCover:



Select DuraShell:



The e-Series cabinet is beautiful

Made from a high-grade synthetic material, the e-Series cabinet is durable and resists fading, water damage, dents and scratches. Paired with all DuraShell® colors and Walnut or Charcoal cover, the rich colors complement any environment. Due to the unique exterior the 524 model is only available in Barnwood or Cordovan with a Walnut cover. Shown left to right: American Cherry, Barnwood and Cordovan.



DuraCover™ is tops

Because energy efficiency is important to the world, Marquis uses the best cover in the market. The DuraCover™ is insulated with the finest certified two pound density foam. It also features an exclusive linear heat seal to prevent heat from escaping. Aside from energy-wise, the DuraCover™ doesn't easily dent and holds 100 lbs. more weight than a standard cover. You'll especially appreciate its strength and safety rating if you have children and pets.

Beauty runs deep

Marquis' DuraShell® interior is an extremely durable Lucite® acrylic that stands up to the elements, resists cracking, fading and blistering. A splash guard coping keeps water spills to a minimum and organic styling makes the interior a one-of-a-kind work of art. Drink holders, interior safety lighting, and a convenient floor drain complete the interior. Marquis® – easy to use – easier to enjoy!

Marquis e Series Special Order Spas 2016

Model	Order Code	Original (Rush)	Next Truck
322-K	TT7	Due to complaints from another dealer, Marquis has removed our prices from the web.	
425-K	FY8		
435-K	FT8		
524-K	EN7		
545-K	FF9		
660-K	SS10		
750-K	SV9		

Options & Upgrades Available

Options/Upgrades	Everyday Collection	Warranties*
Ozonator only	\$199	Five years: structure Three years: major equipment 2015 models only. Two years: surface, plumbing. One year: exterior, minor components and parts.
DuraShell® Interior (see colors below)	Included	
Exterior (see colors below)	Included	
In-Line Spa FROG (replaces an available cup holder)	\$199	
Tempo Audio with Bluetooth*	\$799	
Audio Expansion Port*	\$49	
RF Audio Remote Control Kit*	\$199	
Wi-Fi Transceiver for APP**	\$399	
Twilight Lighting	\$399	
Full Foam Insulation Upgrade***	\$199	
435 Double Pump Upgrade	\$499	

*Due to access limitations, the Audio Expansion Part **or** the RF Audio Remote control option may be added to the Tempo Audio, but **not both of them.**

**Includes one year cloud subscription.

DuraShell® interior colors:

Sierra, Midnight Canyon, Sterling Silver, Deep Waters, Cameo, Glacier, Tuscan Sun, Painted Desert, Pacific Rim, Mayan Copper, Winter Solstice



MADE IN USA

For a strong product and a strong country.

Exterior colors:

Cordovan, Barnwood.

Cover Colors:

Charcoal, Walnut

***eSeries Hot Tubs are standard with foam insulation sprayed on the shell and cabinet with an air space between them.

e Series Collection ~ Made in the same factory by the same people as Marquis, with fewer options, simpler plumbing, and different warranties. Just what you need. New for 2015: on 2-pump models, the second pump is now 2-speed.

*All warranties are limited, and are available for you to read before you buy.